

# PHOTOGRAPHY

**Superintendent – Theodore Scribner**  
 theodorescribner@gmail.com

**Open to Fresno County Residents 18 years & older; maximum of ten prints per exhibitor allowed; no more than two entries may be submitted in the same class**

**Entry Fee** \$7.00 per Entry  
 (Non-Refundable)

**All Fees Due at the Time of Entry Form Submission**

*This year we will only be accepting on line entries. If you will require assistance, in order to make on-line entries. Please call the exhibits office @ 559-453-6890 we will assist you with computer entries.*

<b>Online Entry Due</b>	September 11, 2017 BY MIDNIGHT
<b>Limit</b>	Two Entries per Class per Exhibitor
<b>Photography Received</b>	At The Art Gallery
September 12, 2017	10 AM – 7 PM
September 13, 2017	10 AM – 7 PM
September 14, 2017	10 AM – 7 PM

**All Entries Will Be Accepted Unless Notified**

**Displayed Entries Will Be Released**

October 16, 2017	10 AM – 7 PM
October 17, 2017	10 AM – 7 PM

Owners must collect items in The Fine Arts and Photography Building on the above days. The Big Fresno Fair is not liable for exhibits and will not be responsible for items left. Items will not be stored.

## AWARDS SPONSORED BY THE BIG FRESNO FAIR

<u>Place</u>	<u>Award</u>
Best of Show	\$100.00 Cash, Ribbon & Plaque
People's Choice	Ribbon
Children's Choice	Ribbon
Judge's Choice	\$50.00, Cash & Plaque

*Two (2) Photos are given the Judge's Choice Award*



# RULES & REGULATIONS

**State Rules Apply** As referred to in the Exhibitor Handbook, all state rules apply.

**Entry** Late entry forms will not be accepted and late entries will not be received. Entry fees are nonrefundable. **NO EXCEPTIONS**

**Residence** Open to residents of Fresno County.

**Age** Exhibitor must be 18 years old or older on the opening day of the Fair. **NO EXCEPTIONS**

**Titles/Labeling** The Photographer's name, address, division, class and title must appear on the back of the work, or will not be accepted. Only 29 characters will be allowed for titles of entered work. This includes spaces. Quotation marks and apostrophes will not appear on the display identification tags. Data entry errors will be corrected. No other labeling changes will be permitted. **NO EXCEPTIONS**

**Signature** The entrant's signature must appear on the entry form. The document is a legal record that indicates the exhibitor has read, and is in agreement with the guidelines and requirements expressed in the 2017 Big Fresno Fair Exhibitor Handbook. It is necessary that the form be completed and signed before entry into The Big Fresno Fair exhibits competition. **NO EXCEPTIONS**

**Division Selection** Please be sure to enter in the correct division based on your honest assessment of your experience. **AMATEUR** – A person who engages in an event or activity as a pastime rather than a profession.

**Professional** A person who engages in an event or activity as a livelihood rather than a hobby.

**Original Work** All photography submitted must be the work of the exhibitor. No duplicate prints will be allowed. All photos must be taken by the exhibitor; however, prints may be processed by a photo finisher. **NO EXCEPTIONS**

**Previously Entered Work** No prints previously entered in The Big Fresno Fair are eligible for exhibit.

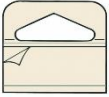
**Disqualification** The Big Fresno Fair reserves the right to exclude any entry that is deemed not to be in the best interest of the Fair for exhibition. The Big Fresno Fair reserves the right to disqualify any exhibitor who does not conduct him or herself in a manner congruent with the temper, character and purpose of The Big Fresno Fair. In the case of disqualification by the Fresno Fair, its agents, or representatives, there will be no entry fee refunds. All monetary awards, ribbons and plaques will be subject to forfeiture. Management reserves the right to limit the number of entries exhibited. **NO EXCEPTIONS**

**Display** Entries selected for exhibit must remain on display for the duration of the Fair.

## AMATEUR PHOTOGRAPHY

**Framing & Mounting** All photos must be mounted on a thin, flat piece of material such as form core or mat board. This must be at least 1/16th of an inch thick, NO cardboard. NO glass or frames are allowed. NO names or signatures on the front of photographs or mats. Prints may otherwise be disqualified. Entrants in the Professional Division are exempt from this structure.

**Hanging** All pictures must be equipped with a photo hanging tab. In the interest of show quality and protection of exhibits, all photographs must be ready to be hung when they are brought to the fairgrounds. Any improperly prepared photographs may be disqualified. Hanging materials may be purchased at a local art/craft store. The Big Fresno Fair will be selling adhesive hooks at \$1.00 each in the building during receiving days only.



**Size Restriction** The minimum size requirement for photos is 8 x 10 inches. The maximum size allowed is 16 x 20 inches. If an entrant chooses to include matting, the entire entry shall not exceed 16 x 20 inches and have no more than a 3 inch mat. 8 x 10 inches must be exposed for viewing.

**For Sale** A Photographer may set a price for each entry, or leave price blank. This will indicate the piece is not for sale. However if piece is for sale, a price must be listed on the entry form at the time of submission. All inquiries regarding sale of entries will be referred directly to the artist to complete the sale. The Big Fresno Fair is not responsible for brokering the sales of exhibits.

**Judges' Discretion** Judges are contracted and act as agents of The 21st District Agricultural Association, Big Fresno Fair. These individuals facilitate the juried exhibition. They retain the authority to, at their own discretion, move items to more appropriate divisions and, or classes. The judges also may disqualify any exhibit that is not a true representation of the category description in which it was entered.

**Placing** The judges may award a first, second, third or honorable mention placement according to merit, and if without merit the judges may make no award under any circumstance. This rule applies whether there are one or more entries in the class.

**Best of Show** The judges shall award a "Best of Show." Winner of "Best of Show" becomes ineligible for 1ST place in that division. The 2nd place then moves to 1st, 3rd moves to 2nd and Honorable Mention moves to 3rd.

**Popular Vote** People's Choice and Children's Choice Award winners are based upon ballots tendered by Fair guests. Winners will receive ribbons.

**Judges' Choice** The Judges will each select a Judge's Choice award winner. A Plaque will be awarded to each.

**Awards** Plaque awards will be given to 1st place winners. The Big Fresno Fair will take every precaution possible for the safety and security of all entries; however, the fair assumes no responsibility, and cannot be held accountable for loss or damage. Upon this condition only, are entries accepted. If he or she should so desire, the artist may obtain insurance for any item. The Big Fresno Fair does not assume any responsibility for artwork not picked up on the scheduled release dates.

**Publicity** The Big Fresno Fair reserves the right to use any print or piece exhibited, for publicity purposes.

A person who engages in an event or activity as a pastime rather than a profession.

**Entry Fee** \$7.00 per Entry  
(Non-Refundable)

### All Fees Due at the Time of Entry Form Submission

**Entry Form Due** September 9, 2017  
**Online Entry Forms Due** September 11, 2017

### All Entries Will Be Accepted Unless Notified

**Awards Offered** 1<sup>st</sup> thru 3<sup>rd</sup>  
Honorable Mention  
Ribbons

### Cash Awards Offered per Class

<u>Place</u>	<u>Awards</u>
1 <sup>st</sup>	\$40.00
2 <sup>nd</sup>	\$30.00
3 <sup>rd</sup>	\$20.00

## DIVISION 1001 COLOR

This division is for color photographs including more than two (2) colors (other than black and white or sepia).

Class

1. **Landscape & Waterscape**  
Views of natural inland scenery (includes lakes, rivers, waterfalls, coast or ocean)
2. **Sunrises/Sunsets**  
Views primarily of sky
3. **Architecture**  
View of a building or part of a building, a city or section
4. **Animals**  
Pets or animals common to the home, wild animals or birds
5. **Agriculture**  
Agricultural scenes, including equipment, crops, produce, animals, etc.
6. **Flowers**  
Domestic or wild
7. **Plants & Trees**  
Domestic (orchards, yards, or wild, etc.)
8. **Humans**  
Adults/children either posing or candid
9. **Transportation**  
Autos, planes, boats, train, etc.
10. **Photojournalism**  
Image tells a story, including but not limited to sports action, disaster, etc.
11. **Macro**  
Close-up or magnified subject, insects or butterflies
12. **Still Life**  
Subject matter is inanimate

- 13. **Creative**  
Photo of subject not as the eye typically sees it or mirrored images
- 14. **Photographer's Choice**  
Subject not fitting in above categories, must not be categorized by the above classes
- 15. **Digitally Manipulated**  
Any subject matter added to photograph
- 16. **Film**

### DIVISION 1002 MONOCHROME

This division is for images consisting of not more than two (2) primary colors (black and white or sepia).

Class

- 1. **Landscape**  
Views of natural inland scenery (includes lakes, rivers, waterfalls, coast or ocean)
- 2. **Architecture**  
View of a building or part of a building
- 3. **Animals**  
Both domestic & wild
- 4. **Flowers**  
Domestic or wild
- 5. **Plants & Trees**  
Domestic orchards, yards or wild
- 6. **Humans**  
Adults/children either posing or candid
- 7. **Photojournalism**  
Image tells a story, including but not limited to sports action, disaster, etc.
- 8. **Still Life**  
Subject matter is inanimate
- 9. **Creative**  
Photo of subject not as the eye typically sees it or manipulated by a computer
- 10. **Photographer's Choice**  
Subject not fitting in above categories, must not be categorized by the above classes
- 11. **Digitally Manipulated**  
Any subject matter added to photograph
- 12. **Film**



## 2017 FAIR THEME

**Not Counted Toward Overall Maximum of Entries  
"WELCOME TO AH'S"**

<b>Entry Fee</b>	None
<b>Entry Form Due</b>	September 9, 2017
<b>Online Entry Forms Due</b>	September 11, 2017
<b>Limit</b>	Open to any Photographer one Entry per Exhibitor
<b>Awards Offered</b>	1 <sup>st</sup> thru 3 <sup>rd</sup> Honorable Mention Ribbons

### DIVISION 1003 SPECIAL THEME SECTION

Class

- 1. Any Subject Relating to the  
2017 Theme "WELCOME TO AH'S"

## PROFESSIONAL PHOTOGRAPHY

A person who engages in an event or activity as a livelihood rather than a hobby. As stated in the rules for photography, the professional entrant is allowed two properly framed or mounted photos that must be ready for hanging. There are no size limitations; however available space dictates the number of entries that can be exhibited for this category. Photos and/or matting cannot have photographers business or website information printed on.

<b>Entry Fee</b>	\$7.00 per Entry (Non-Refundable)
<b>All Fees Due at the Time of Entry Form Submission</b>	
<b>Entry Form Due</b>	September 9, 2017
<b>Online Entry Forms Due</b>	September 11, 2017
<b>Limit</b>	Two Entries per Exhibitor
<b>Awards Offered</b>	1 <sup>st</sup> thru 3 <sup>rd</sup>
<b>Cash Awards Offered</b>	None

### DIVISION 1004 PROFESSIONAL

Class

- 1. Any Subject